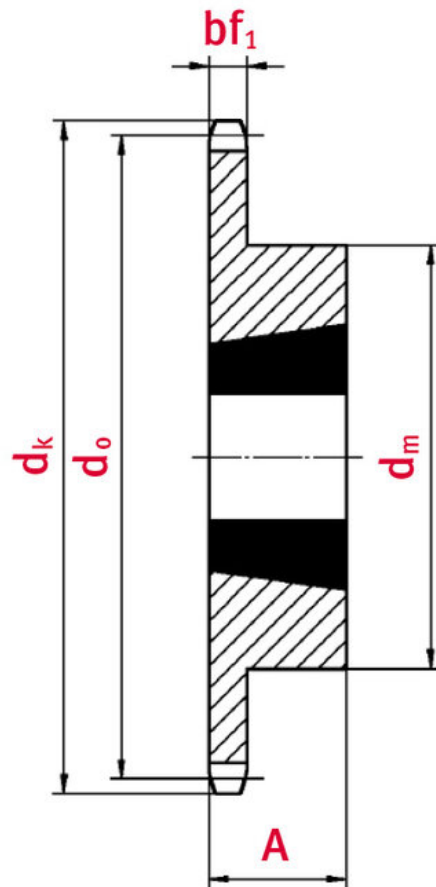


Sprocket with taper-lock bush 10B-1 27 teeth

Part no.: 81006762

Model: 27 teeth



Technical data

SPROCKET	10B
Teeth	27
Tooth width simplex bf_1 (mm)	9,1
Tip circle d_k (mm)	143,6

Total length L (mm)	32
Hub	90
Taper-lock bush (Ref.-Nr.)	2012
Sprocket type	1

Product Information

Taper-lock clamping hubs enable the precise axially-centred fixing of hubs on shafts. When used with sprockets, they offer a twofold advantage over a shaft-to-hub connection with keyways: quick fitting and better centring.

REQUEST DIRECTLY ONLINE NOW

<https://www.iwis.com/en-en/products-services/sprocket-with-taper-lock-bush-10b-1-27-teeth~p6916>

Useful information

CALCULATION PROGRAM

InduKet: the Chain Drive Calculation Program for Engineers.

[iwis.com/chaincalc](https://www.iwis.com/chaincalc)

CHAIN CALCULATION

The right drive solution for your challenge.

chaindrive@iwis.com

SERVICES

ChainFinder, CAD data, iwis Chain Handbook and more.

[iwis.com/services](https://www.iwis.com/services)