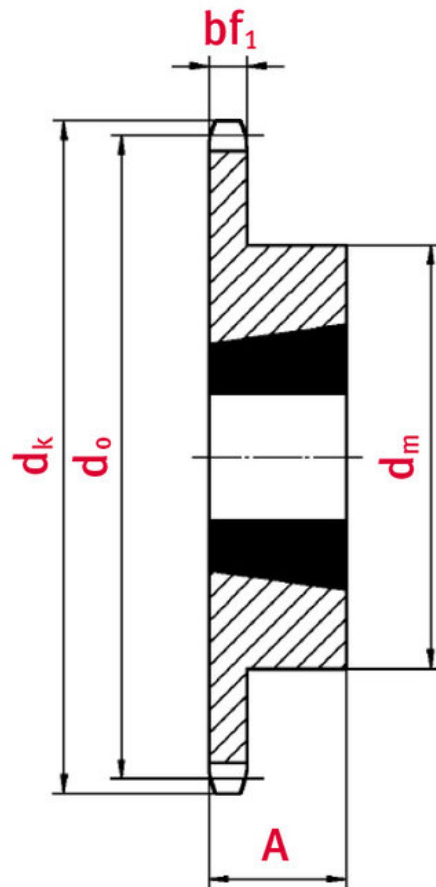


## Sprocket with taper-lock bush 10B-1 17 teeth

Part no.: 81006753

Model: 17 teeth



### Technical data

|                              |      |
|------------------------------|------|
| SPROCKET                     | 10B  |
| Teeth                        | 17   |
| Tooth width simplex bf1 (mm) | 9,1  |
| Tip circle dk (mm)           | 93,3 |

|                            |      |
|----------------------------|------|
| Total length L (mm)        | 25   |
| Hub                        | 71   |
| Taper-lock bush (Ref.-Nr.) | 1610 |
| Sprocket type              | 1    |

## Product Information

Taper-lock clamping hubs enable the precise axially-centred fixing of hubs on shafts. When used with sprockets, they offer a twofold advantage over a shaft-to-hub connection with keyways: quick fitting and better centring.

**REQUEST DIRECTLY ONLINE NOW**

<https://www.iwis.com/en-en/products-services/sprocket-with-taper-lock-bush-10b-1-17-teeth~p6907>

## Useful information

### **CALCULATION PROGRAM**

InduKet: the Chain Drive Calculation Program for Engineers.

[iwis.com/chaincalc](https://www.iwis.com/chaincalc)

### **CHAIN CALCULATION**

The right drive solution for your challenge.

[chaindrive@iwis.com](mailto:chaindrive@iwis.com)

### **SERVICES**

ChainFinder, CAD data, iwis Chain Handbook and more.

[iwis.com/services](https://www.iwis.com/services)