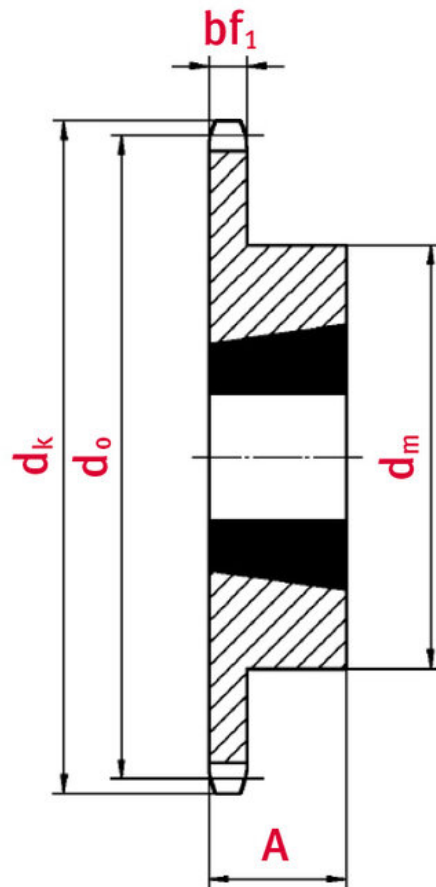


Sprocket with taper-lock bush 10B-1 16 teeth

Part no.: 81006752

Model: 16 teeth



Technical data

| | |
|---------------------------------|------|
| SPROCKET | 10B |
| Teeth | 16 |
| Tooth width simplex bf_1 (mm) | 9,1 |
| Tip circle d_k (mm) | 88,3 |

| | |
|----------------------------|------|
| Total length L (mm) | 25 |
| Hub | 70 |
| Taper-lock bush (Ref.-Nr.) | 1610 |
| Sprocket type | 1 |

Product Information

Taper-lock clamping hubs enable the precise axially-centred fixing of hubs on shafts. When used with sprockets, they offer a twofold advantage over a shaft-to-hub connection with keyways: quick fitting and better centring.

REQUEST DIRECTLY ONLINE NOW

<https://www.iwis.com/en-en/products-services/sprocket-with-taper-lock-bush-10b-1-16-teeth~p6906>

Useful information

CALCULATION PROGRAM

InduKet: the Chain Drive Calculation Program for Engineers.

[iwis.com/chaincalc](https://www.iwis.com/chaincalc)

CHAIN CALCULATION

The right drive solution for your challenge.

chaindrive@iwis.com

SERVICES

ChainFinder, CAD data, iwis Chain Handbook and more.

[iwis.com/services](https://www.iwis.com/services)