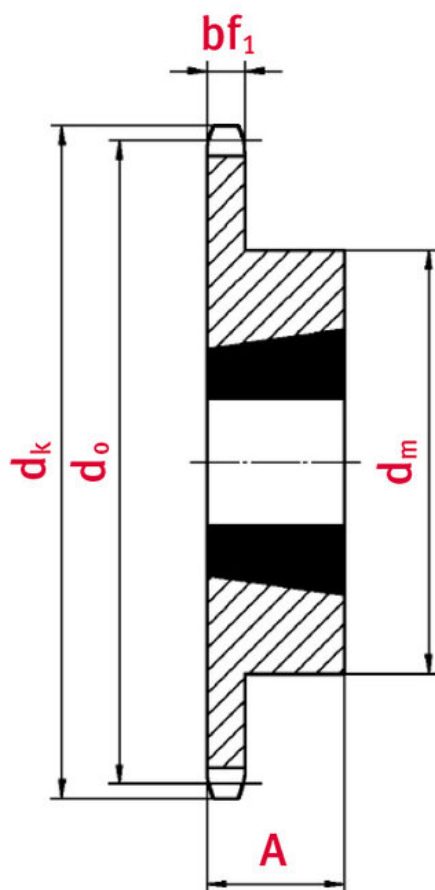




## Sprocket with taper-lock bush 06B-1 18 teeth

Part no.: 81006673

Model: 18 teeth



### Technical data

SPROCKET	06B
Teeth	18
Tooth width simplex $bf_1$ (mm)	5,3
Tip circle $d_k$ (mm)	58,6

Total length L (mm)	22
Hub	45
Taper-lock bush (Ref.-Nr.)	1008
Sprocket type	1

## Product Information

Taper-lock clamping hubs enable the precise axially-centred fixing of hubs on shafts. When used with sprockets, they offer a twofold advantage over a shaft-to-hub connection with keyways: quick fitting and better centring.

**REQUEST DIRECTLY ONLINE NOW**

<https://www.iwis.com/en-en/products-services/sprocket-with-taper-lock-bush-06b-1-18-teeth~p6841>

## Useful information

### CALCULATION PROGRAM

InduKet: the Chain Drive Calculation Program for Engineers.

[iwis.com/chaincalc](https://www.iwis.com/chaincalc)

### CHAIN CALCULATION

The right drive solution for your challenge.

[chaindrive@iwis.com](mailto:chaindrive@iwis.com)

### SERVICES

ChainFinder, CAD data, iwis Chain Handbook and more.

[iwis.com/services](https://www.iwis.com/services)