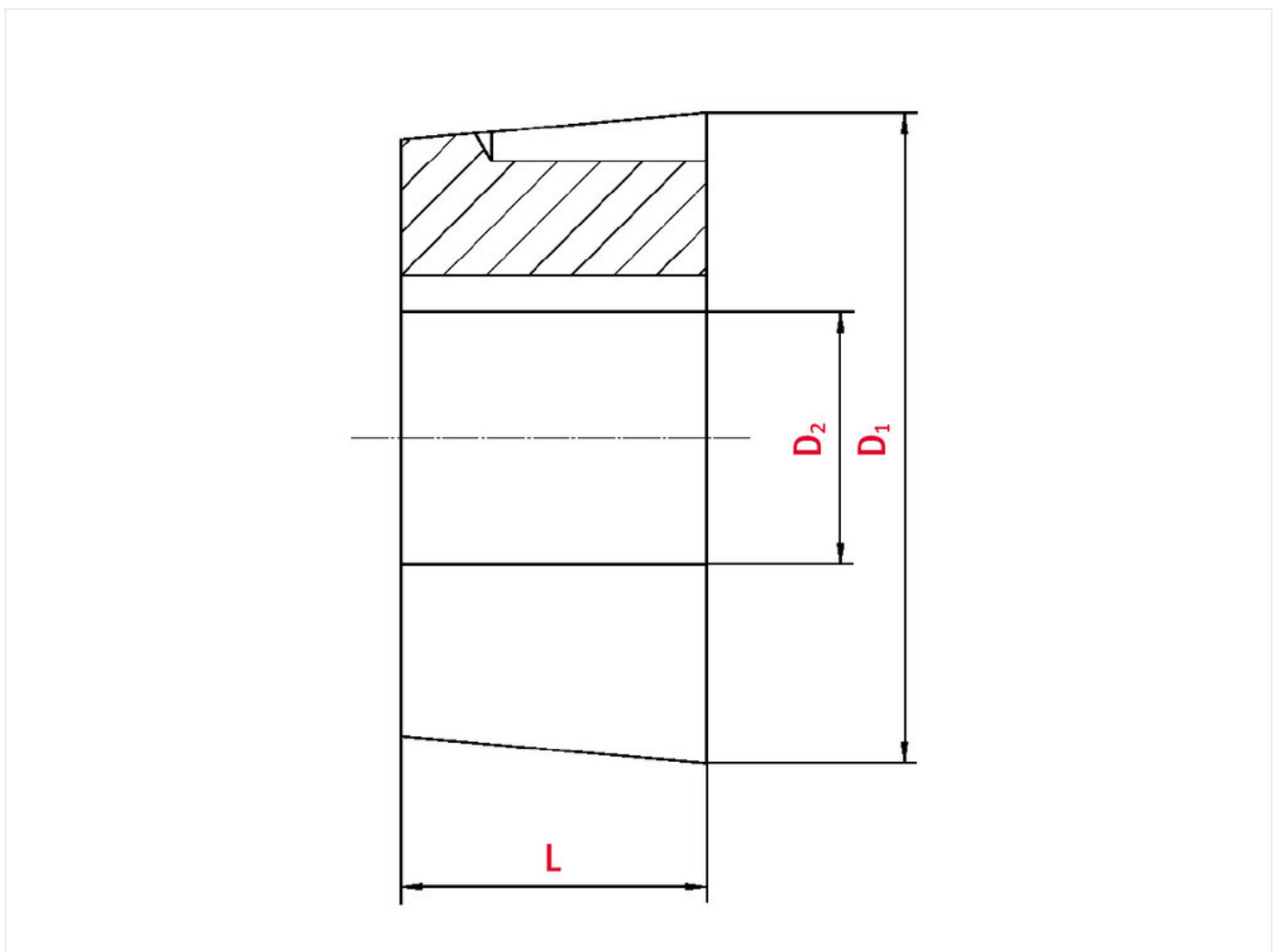




Taper-lock bush

Part no.: 81007020
Packaging Unit: 1pce



Technical data

| SPROCKET | |
|----------------------------|-------|
| Taper-lock bush (Ref.-Nr.) | 4545 |
| Inner bore diameter | 55 |
| Length | 114,3 |

Diameter

162

Product Information

Taper-lock clamping hubs enable the precise axially-centred fixing of hubs on shafts. When used with sprockets, they offer a twofold advantage over a shaft-to-hub connection with keyways: quick fitting and better centring.

REQUEST DIRECTLY ONLINE NOW

<https://www.iwis.com/en-en/products-services/taper-lock-bush~p2095546>

Useful information

CALCULATION PROGRAM

InduKet: the Chain Drive Calculation Program for Engineers.

[iwis.com/chaincalc](https://www.iwis.com/chaincalc)

CHAIN CALCULATION

The right drive solution for your challenge.

chaindrive@iwis.com

SERVICES

ChainFinder, CAD data, iwis Chain Handbook and more.

[iwis.com/services](https://www.iwis.com/services)