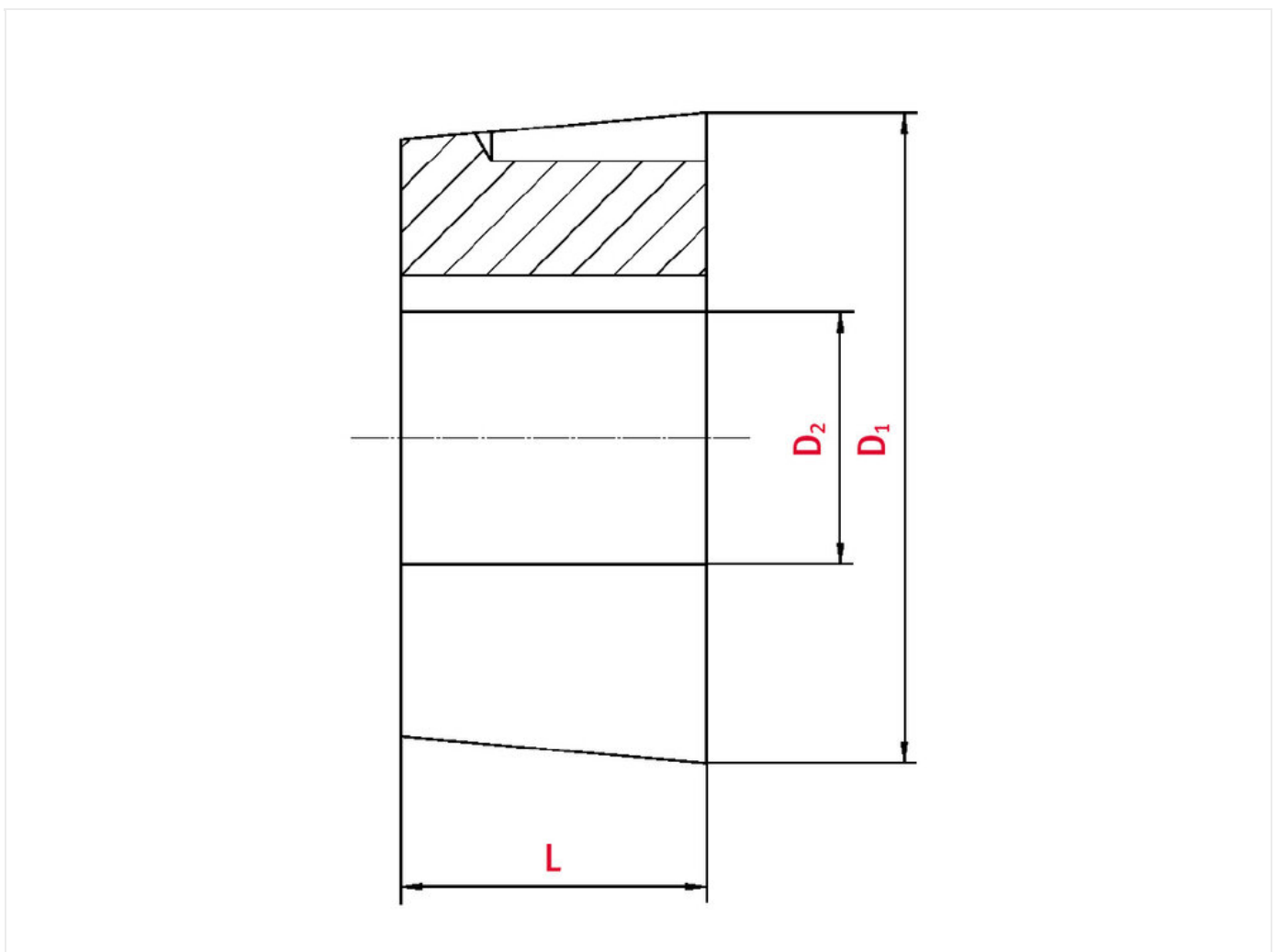




## Taper-lock bush

Part no.: 81006941  
Packaging Unit: 1pce



## Technical data

SPROCKET	
Taper-lock bush (Ref.-Nr.)	2012
Inner bore diameter	18
Length	31,8

Diameter	70
----------	----

## Product Information

Taper-lock clamping hubs enable the precise axially-centred fixing of hubs on shafts. When used with sprockets, they offer a twofold advantage over a shaft-to-hub connection with keyways: quick fitting and better centring.

**REQUEST DIRECTLY ONLINE NOW**

<https://www.iwis.com/en-en/products-services/taper-lock-bush~p2095463>

## Useful information

<p><b>CALCULATION PROGRAM</b></p> <p>InduKet: the Chain Drive Calculation Program for Engineers.</p> <p><a href="https://www.iwis.com/chaincalc">iwis.com/chaincalc</a></p>	<p><b>CHAIN CALCULATION</b></p> <p>The right drive solution for your challenge.</p> <p><a href="mailto:chaindrive@iwis.com">chaindrive@iwis.com</a></p>	<p><b>SERVICES</b></p> <p>ChainFinder, CAD data, iwis Chain Handbook and more.</p> <p><a href="https://www.iwis.com/services">iwis.com/services</a></p>
---	---	---